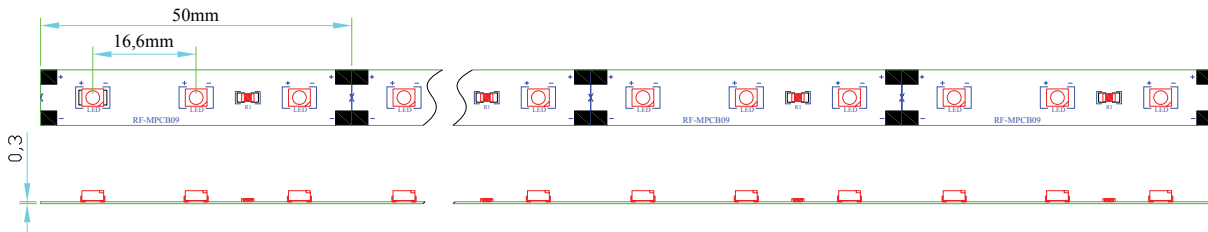


30mA flexible tape 6 metre roll 12 volt DC



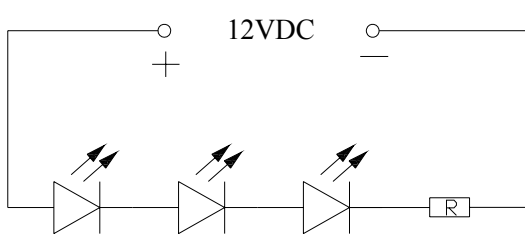
Technical Features

Linear separable LED strip on flexible

Circuit diagram for smallest unit

Size of printed circuit board (L x W x H) 6000 mm x 9 mm x 2,5 mm

Size of smallest unit (L x W): 50mm x 14 mm
 Smallest unit of 3 LEDs can be cut out at regular intervals without damaging the rest of the module



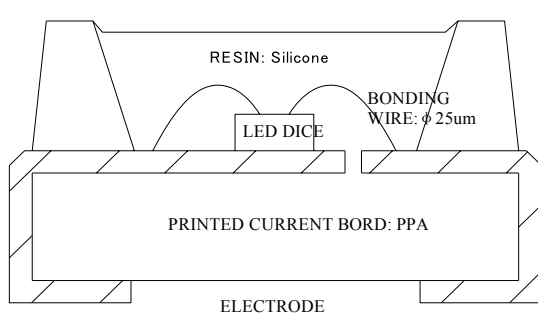
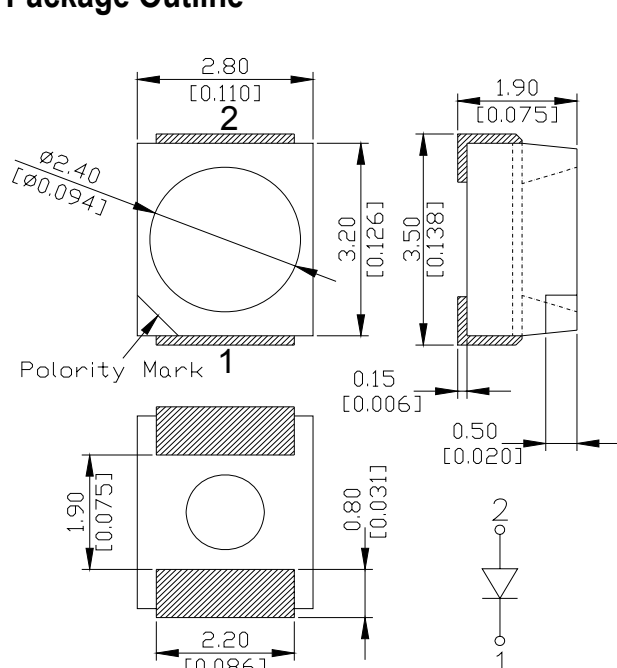
Technical Operating Data (per meter)

Product	Color	Number of LEDs /M	Voltage [V DC]	Power [W]	Current [A]	Viewing angle[°]	Wave length[nm] Color temp [°]	Lum.[lm] IV[mcd]
30mAwhite	White	60	12	7.2	0.6	120	6500 K	300 lm
30mAwarm	Warm white	60	12	7.2	0.6	120	3200 K	180 lm
30mAbue	Blue	60	12	7.2	0.6	120	465 nm	20 lm
30mAgreen	Green	60	12	7.2	0.6	120	525 nm	132 lm
30mAyellow	Yellow	60	12	7.2	0.6	120	588 nm	80 lm
30mAorange	Orange	60	12	7.2	0.6	120	625 nm	80 lm

Feature

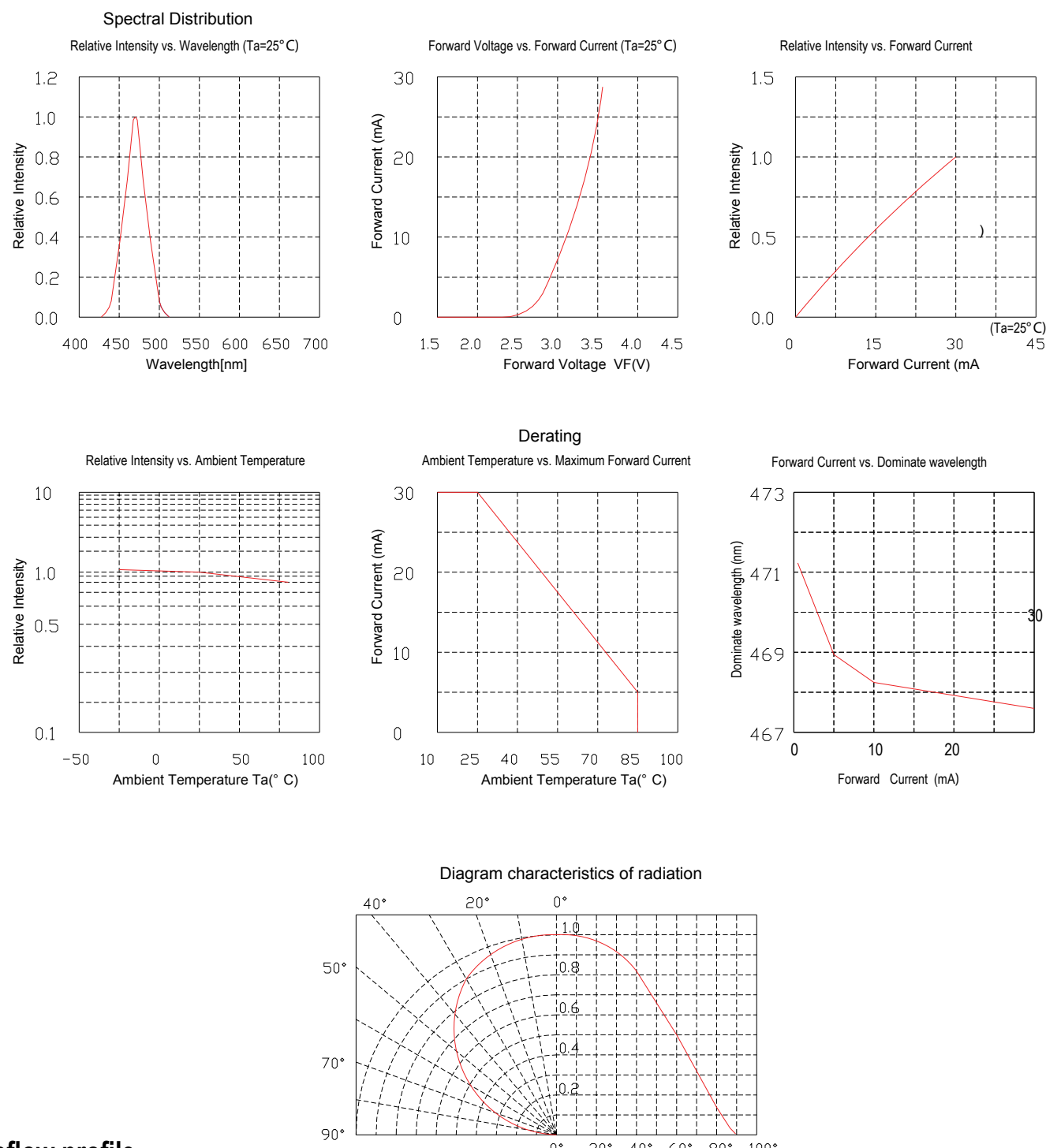
- ◆ Viewing angle:120 deg
- ◆ The materials of the LED dice is InGaN
- ◆ 3.50mm×2.80mm×1.90mm SMT-LED
- ◆ RoHS compliant lead-free soldering compatible

Package Outline



ATTENTION
 OBSERVE PRECAUTIONS
 FOR HANDLING
 ELECTROSTATIC
 SENSITIVE DEVICES

Typical optical characteristics curves



Reflow profile

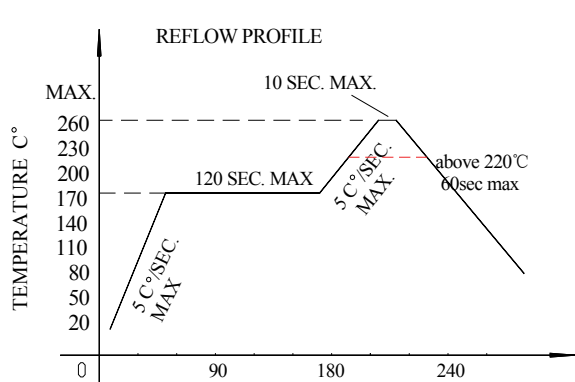
- Soldering condition
- Recommended soldering conditions

Reflow Soldering		Hand Soldering	
Pre-heat	160~180°C	Temperature	300°C Max.
Pre-heat time	120 seconds Max.	Soldering time	3 second Max. (one time only)
Peak temperature	260°C Max.		
Soldering time	10 seconds Max.		
Condition	Refer to Temperature-profile		

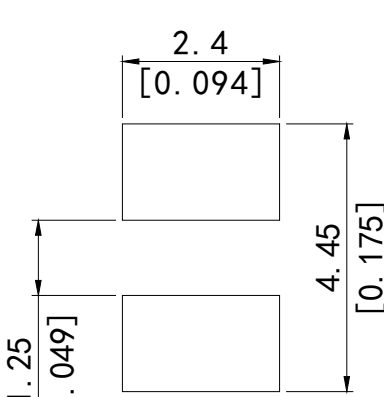
• After reflow soldering rapid cooling should be avoided

- Temperature-profile (Surface of circuit board)

Use the following conditions shown in the figure.



RECOMMEND PAD DESIGN (Units: mm)



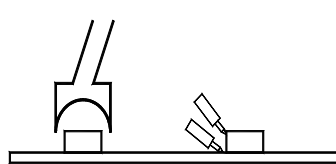
1. Reflow soldering should not be done more than two times
2. When soldering ,do not put stress on the LEDs during heating

- Soldering iron

1. When hand soldering, keep the temperature of the iron under 300°C, and at that temperature keep the time under 3 sec.
2. The hand soldering should be done only a time
3. The basic spec is ≤5 sec. when the temperature of 260°C, do not contact the resin when hand soldering

- Rework

1. Customer must finish rework within 5 sec under 260°C
2. The head of iron can not touch the resin
3. Twin-head type is preferred.



CAUTIONS

The encapsulated material of the LEDs is silicone . Therefore the LEDs have a soft surface on the top of package. The pressure to the top surface will be influence to the reliability of the LEDs. Precautions should be taken to avoid the strong pressure on the encapsulated part. So when using the picking up nozzle, the pressure on the silicone resin should be proper